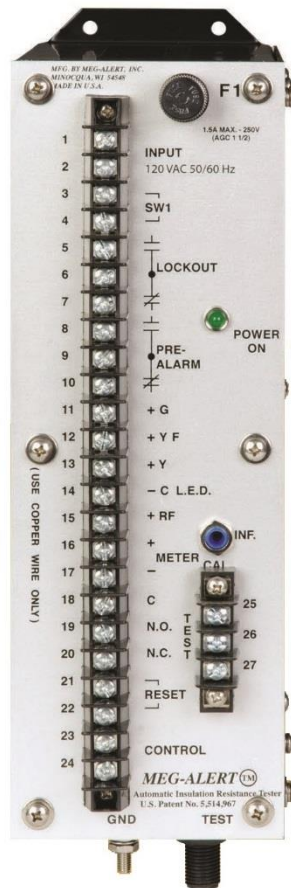




## MOTOR guard™

- AC Induction Motors
- AC Synchronous Motors
- Wound Rotor Motors



**Reduce Risk  
to Save Lives**



Automatic Insulation Resistance Tester that monitors and protects critical-duty motors



### Features: Model GP2500-MU-AS-D1 GP5000-MU-AS GP5000-MU-HV-AS-D1

- Single Motor Model
- Auto/Manual test operation
- Adjustable alarm set point
- Adjustable pre-alarm set point
- Latching alarm contacts with manual reset
- Fused input and H.V. test lead
- 15 ft. two-way current-limited H.V. test switch
- 2500 VDC/5000 VDC test voltage
- Remote Calibration and system test switch
- Long-life, flashing remote LED/switch assembly w/ 15 ft. cable
- Digital meter with 4-20 mA output signal
- 10 Year Warranty

### Optional Features:

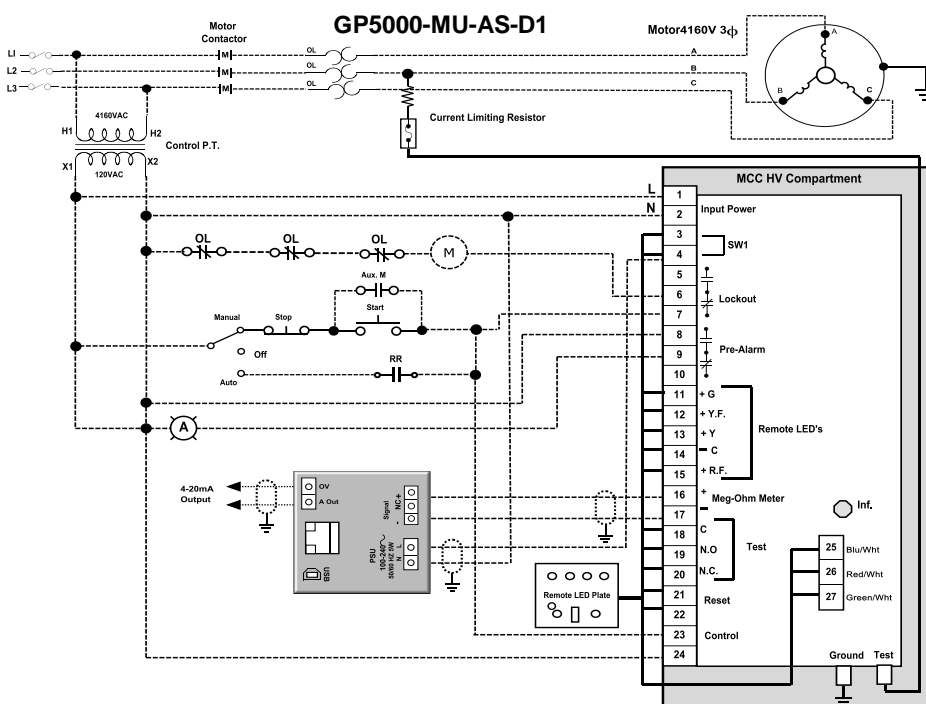
- 1% Panel meter with 4" color coded dial
- 4-20 mA transducer
- EZ-Mount bracket for switch assembly

### SPECIFICATIONS: Model GP2500-MU-AS-D1 GP5000-MU-AS GP5000-MU-HV-AS-D1

Input Voltage: 120 VAC, (optional 240 VAC), 50/60 Hz  
 Input Current: .15 A max. @ 120 VAC  
 Test Voltage: 2500/5000 VDC @ 700 µA max.  
 Maximum Line Voltage: 7500 V RMS (HV model – 15 KV)  
 Control Sensing: N/O Contact or 120 VAC, 50/60 Hz  
 Alarm Time Delay: 0 – 2 Minutes  
 Alarm/Lockout Contacts: 1 Form C, 5A @ 240 VAC or 28 VDC  
 Pre-Alarm Contact: 1 Form C, 5A @ 240 VAC or 28 VDC  
 LED Display: Power On: Green  
 Test On: Yellow  
 Pre-Alarm: Yellow Flashing  
 Alarm: Red Flashing  
 Meter Output: 1% Analog Signal  
 Accuracy: 1% Overall  
 Ambient Temperature: -20° F to 140° F  
 Size: 12" H x 4" W x 8.50" D  
 Weight: 7.5 lbs.  
 Assembly: Meets UL 508/61010 specifications

### Operation:

MotorGuard applies a current limited, fixed DC voltage to the motor windings during idle periods. A solid state comparator circuit monitors measured leakage current to the ground. Two adjustable set points, factory preset to customer specifications, can be programmed to signal a pre-alarm, alarm and lockout the equipment from operating if the low set point is exceeded. The manual reset feature enables a return to operational status only after the alarm condition has been corrected. MotorGuard will not impair normal operation of the equipment being monitored.



### Typical Wiring Diagram

In addition to a wide variety of standard in-stock systems, our engineers will work with you on custom applications. Call the factory for details.

8766 Frank Drive  
 Minocqua, WI 54548 USA  
 715-356-1499  
 sales@megalert.com  
 service@megalert.com  
 www.MegAlert.com

U.S. Patents  
 9,664,716 – 9,977,067 – 10,782,357

<p>Meg-Alert, Inc. 715-356-1499</p>	<b>Legend</b> RR Remote Start Relay Remote Alarm Motor Starter Shielded Wires Customer Provided Wiring	Drawn By: KIM Delamater Checked: R. Zeim	<b>GP5000-MU-AS-D1                  with Digital Meter                  Typical Wiring Diagram</b>	Date: 9/21/2020 Scale: None
	MEGAlert, Inc. 715-356-1499 Drawn By: KIM Delamater Checked: R. Zeim Date: 9/21/2020 Scale: None			

