

GEN guard™ GP500-WG

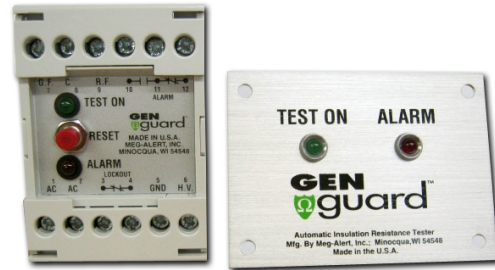
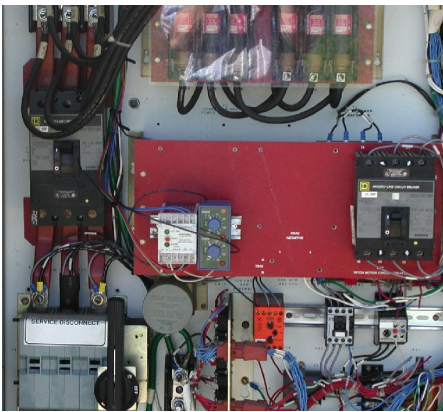
Because WIND GENERATOR Failure is Not an Option!

Meg-Alert™ has developed its newest model, the GP500-WG **Gen Guard**. It is an in-line device designed to continuously test the dielectric strength of winding insulation in



wind turbine generators up to 600 VAC while the generator is idle. The GP500-WG is designed for use with all types of wind turbine generators, and can be easily adapted into existing control and alarm circuits. The special low cost

option that will improve the reliability and extend the operating life of the generator. Once the alarm trip point is exceeded, the alarm/lockout contacts can be used to signal an alarm system and prevent the generator from being operated. By preventing a generator failure at start up, the customer will save on expensive rewind and labor costs, along with costly downtime. The GP500-WG comes with DIN rail mounting capability and its smaller size makes it easy to install in existing control panels.



GP500-WG

The GP500-WG is a preventive maintenance tool that will become an important member of your maintenance team. It will be on duty 24 hours a day, testing and monitoring the insulation integrity of idle generators, to within 2% accuracy. It will automatically detect early insulation breakdown, providing the user with a means to protect equipment from impending failure and increase generator reliability.

Value Added Benefits

- Increased reliability of generator operation
- Reduced maintenance staff time and repair budget expenses
- Significant safety improvement eliminating Arc flash exposure
- Increased operating efficiency
- Extended generator life
- Planned generator reconditioning vs. generator rewind
- First line of defense for any P.M. Program

(800) 778-5689 **MEG alert™**

www.megalert.com
8766 Frank Drive • Minocqua, Wisconsin 54548
Fax: (715) 356-6099



Standard Features:

- Auto/Manual test operation
- Adjustable alarm set point
- Latching alarm contacts with manual reset
- Fused input and test output
- 500 VDC test voltage
- Long-life, flashing LED display
- Compact, lightweight enclosure
- DIN rail mounting bracket
- Five-year warranty

Optional Features:

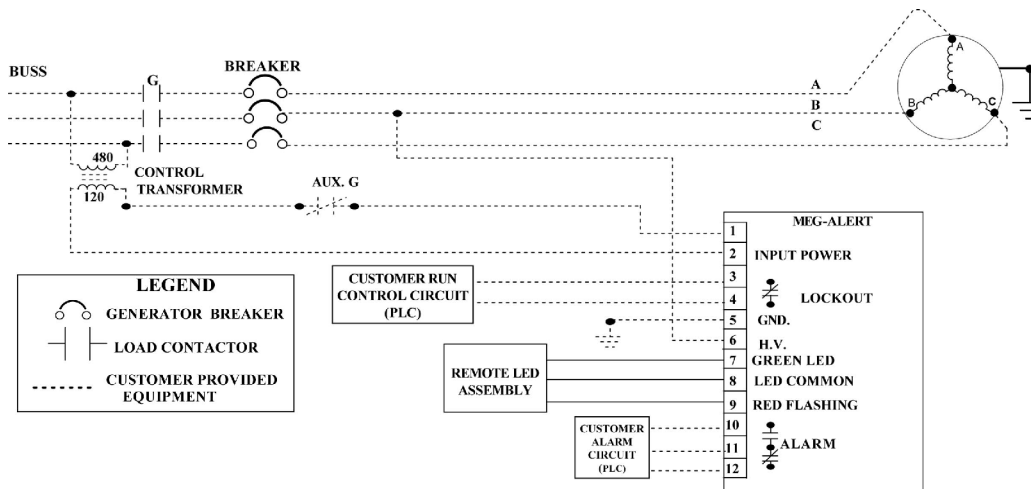
- Auto Alarm/Lockout Reset
- Remote LED Display Assembly
- 1% or 2% Analog Meter Output

Gen Guard GP500-WG Specifications

Input Voltage: 120/240 VAC, 50/60 HZ @.05A max.
Test Voltage: 500/1000 VDC @ 200µA
Maximum Line Voltage: 750 V RMS
Control Sensing: N/C Contact
Time Delay: 0 - 10 Seconds
Alarm Contact: 1 Form C, 5A @ 240 VAC or 28 VDC
Lockout Contact: 1 N/C, 5A @ 240 VAC or 28 VDC
Metering: 1% or 2% analog meter, color coded dial
LED Display: Test on: green, Alarm: red flashing
Accuracy: 2% Overall
Ambient Temperature: -14° F to 140° F
Size: 2.75" H x 2.25" W x 4.5" D
Weight: 1 lb.

OPERATION:

When properly installed, the **Gen Guard** applies a current limited, fixed D.C. voltage to the windings of the generator when it is idle. The device measures the leakage current to ground, which is monitored by a solid state comparator circuit. The comparator has an adjustable set point which is preset at the factory to customer specifications. When the set point is exceeded, the **Gen Guard** can be programmed to sound an alarm and lockout the equipment from being operated. The device is equipped with a manual reset feature, which will return the equipment to operational status only after the alarm condition has been corrected. The **Gen Guard** is safe and reliable and will not impair the normal operation of the equipment being monitored.



Typical Wiring Diagram

In addition to a wide variety of standard, in-stock systems, our engineers will work with you on custom applications. Call the factory for more details.

*Optional Accessories:
2% panel meter*



We here at **Meg-Alert™** are dedicated to customer safety and equipment reliability, which results in greater productivity and increased profits. The very first time a **Meg-Alert™** unit prevents an equipment failure, it pays for itself. Contact your local sales representative for more information on **Meg-Alert™** product lines.

(800) 778-5689

MEG alert™
www.megalert.com